

**MODULAR WIRING
SYSTEMS LTD**

“Connections to Energise Your Ideas”

MWS ARMOURFLEX



MWS ARMOURFLEX®

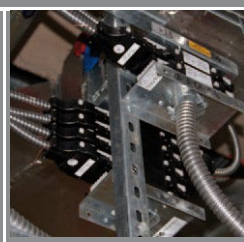
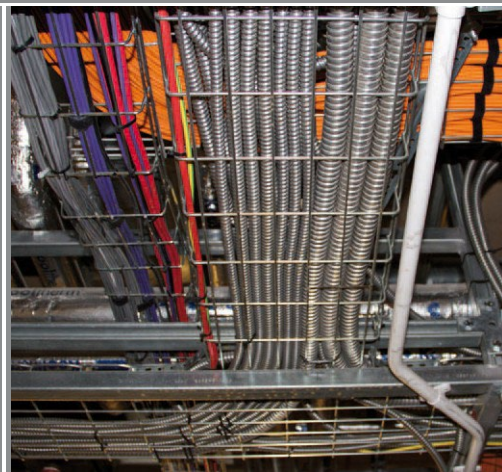
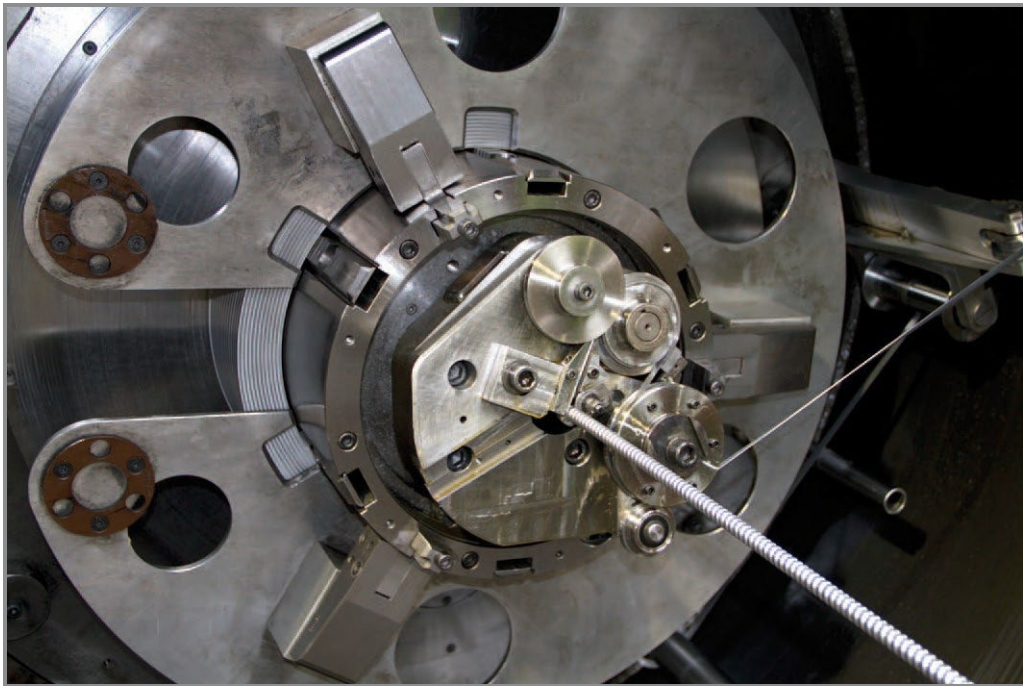
FLEXIBLE GALVANISED STEEL CONDUIT

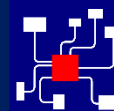
MWS Armourflex is a range of flexible galvanised steel metallic conduit.

Having good resistance for, crushing and impact these conduits have numerous commercial and industrial applications.

These include rail; wiring to machinery; underfloor; factories; general protection of any optical fibre or copper cables indoor or outdoor; CCTV; alarms.

We can also offer pre-wired conduit solutions.





FLEXIBLE GALVANISED STEEL CONDUIT

MWS ARMOURFLEX



MWS ARMOURFLEX GS - Flexible Galvanised Steel Conduit

Nominal overall diameter	Net weight	Min. bending radius
mm	kg/m	mm
16	0.17	240
20	0.23	300
25	0.28	375
32	0.37	480
40	0.43	600

TECHNICAL DATA

- Flexible galvanised steel conduit, good mechanical stability and flexibility.
- Material: Galvanised steel, temperature range + 300 degrees C, isolation IP 40.
- Self coloured.
- Crush resistance to 1500 N.
- Usage, where a high degree of mechanical protection is required.

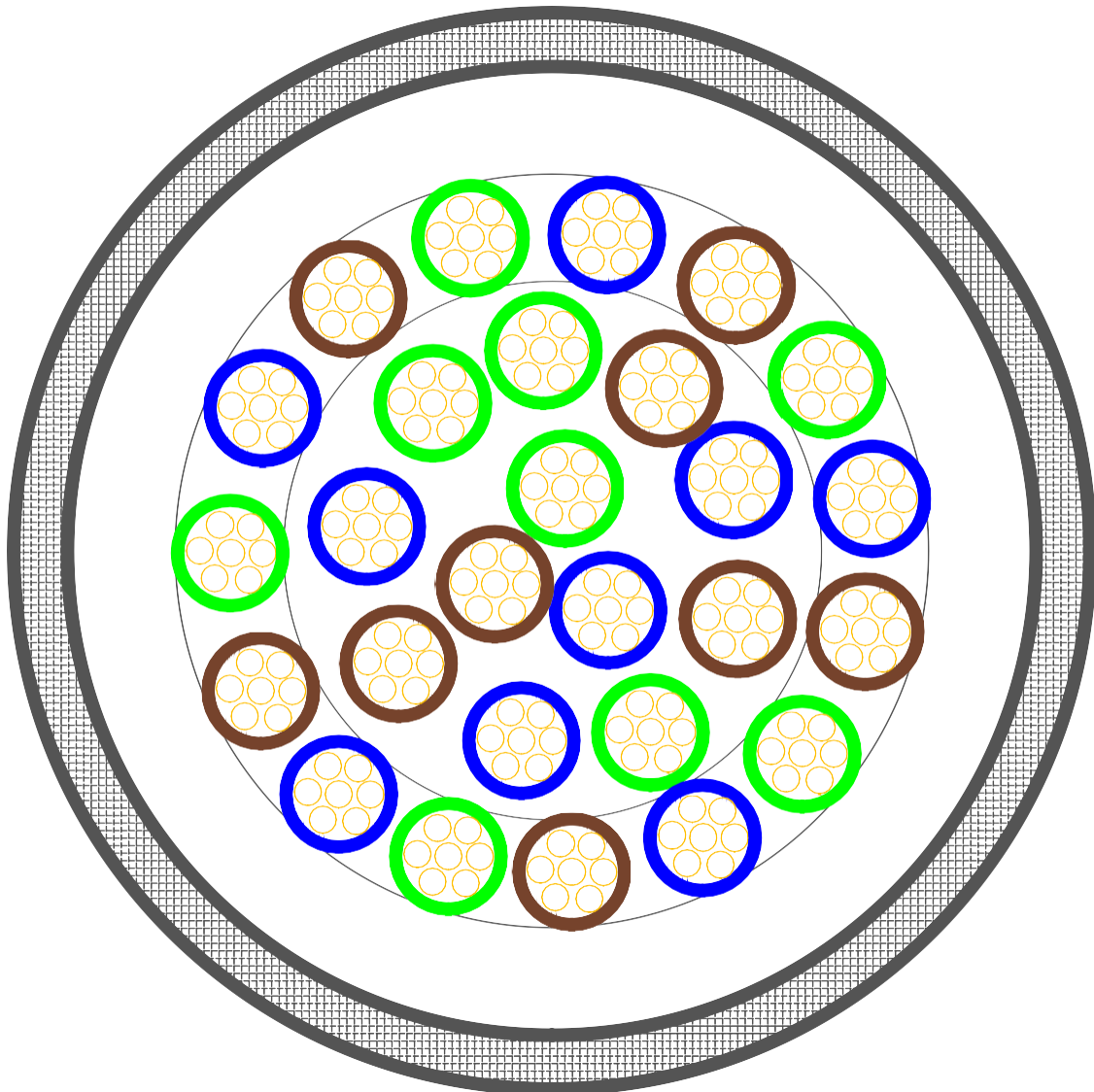
The Minimum bend radius of not less than 15x the outer diameter of the cable should be followed during the installation.

The over sheath or armour should not be pulled with the full weight of the cable drum on its pay off stand.

All our conduits are available in coil lengths of 10 - 20 - 25 - 30 - 40 - 50 meters or longer if required. We recommend that cutting of this product is done with our rotary cutting tool.

Homerun

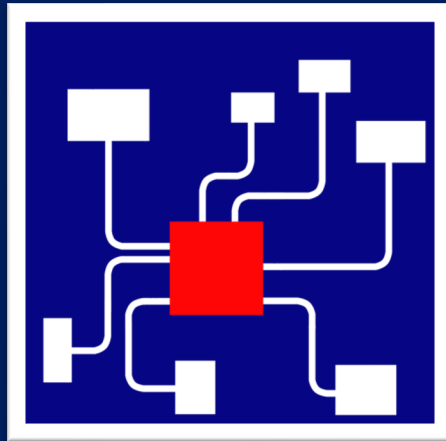
The Home Run cable comprises of multiple conductors of BASEC approved, E15 insulation, contained with Mylor wrap to prevent snagging within the Home Run outer sheath. Each individual conductor is mark continuously throughout the length of Home Run assembly at 150mm spacing with the corresponding port number it is wired to and facilitates identification. The number of cores in a Home run is: 18 core in the case of a 6 Port MDB or 27 core in the case if a 9 port MDB. (The option of ring circuits and/or a mix of ring/radial circuits are also readily available on request).



A label on the front of the MDB indicates the port configuration, distribution board and circuit references. In addition each MDB is provided with a unique manufacturing code for identification and record purposes.

MDB's are factory assembled units to BS EN IEC 61535:2019 and as such should not be altered/modified in anyway.

www.modularwiring.com



MODULAR WIRING SYSTEMS

"Connection to Energise Your Ideas"

Chesterfield Office:
Unit 1 Park Road
Holmewood Industrial Estate
Holmewood Chesterfield
S42 5UW

London Office:
1 King Street
London
EC2V 8AU

01246858009

estimates@modwire.com